



# Spring 2020 Newsletter

Registered Charity 1183093

Filming for Abandoned Engineering. Will be featured in the latest series, now showing in the UK.



## R.I.P. Roy Neate

### Sadly missed



Early Newsletter, such a lot to tell you. Looks like 2020 is going to continue like 2019, a 'whirlwind'. A bit of sad news though, one of our very active members passed away in the New Year. R.I.P. Roy Neate. We have a couple of well support meetings, Trustees and Management Committee, minutes to be circulated.

On Saturday 7th March 2020 we start off again with our Saturday openings, but this time with a difference. It will also be a chance for a Working Party.

We have been in the news with visits by the new MP for Stoke North offering his support, so the future looks promising .....



**We have a Vision Team, Michael Ansell, Geoff Owen, Barry Ashley and Alan Danby who have been looking at our Vision 2020 - 2025. They have been exchanging ideas about what they see as the future of the site and when completed will present it to the City Council. It is not an easy task, but it is coming together and it does fit alongside the Vision the newly elected MP for Stoke North Jonathan Gullis sees.**

[www.chatterleywhitfieldfriends.org.uk](http://www.chatterleywhitfieldfriends.org.uk)

[www.facebook.com/ChatterleyWhitfield](http://www.facebook.com/ChatterleyWhitfield)

[www.twitter.com/chatt\\_whit](http://www.twitter.com/chatt_whit)

SEPTEMBER 12TH AND 13TH  
SEPTEMBER 19TH AND 20TH



**SATURDAY 7th MARCH 2020  
OPEN MORNING  
&  
WORKING PARTY**

**IT IS THAT TIME OF THE  
YEAR AGAIN.....**

Saturday 7th March 2020

Open for tours

10.30am & 11.30am

**BUT**

It is also a Working Party day

10.00 am to 2.00 pm

**Extra day added**

Saturday 4th April 2020

Working Party

10.00am to 4.00 pm



Come a long and see us.....  
Always a brew on....  
Join Izzy and Macca..... (Steve  
keeping an eye on things as Health and  
Safety Team member)  
Outside working, SHORTS optional.....



Our Membership Secretary Barry Ashley is now processing all membership applications which are normally received via Pay Pal. However we do accept cash or cheque.

We now have a card reader and can accept payments on line when you visit us....

The 'Friends' depend on donations from everyone to survive, with every penny received being used on work carried out by the 'Friends', the upkeep of the Heritage Centre, its exhibits and no-one is paid for the work they do in keeping it all running.

The present membership is still only  
**£5.00 a year.....**

Baz is waiting to hear from you....

[membership@chatterleywhitfieldfriends.org.uk](mailto:membership@chatterleywhitfieldfriends.org.uk)





**Jonathan Gullis MP** is at [Chatterley Whitfield Colliery](#).

□ MINISTER VISITS CHATTERLEY WHITFIELD □

I was delighted to see the government Minister for Arts, Heritage and Tourism, [Helen Whately](#), accept my invitation to come and visit the incredible [Chatterley Whitfield](#) Colliery.

I said as the candidate to be the MP for Stoke-on-Trent North, Kidsgrove and Talke they protecting and preserving the future of Chatterley Whitfield was one of my top priorities. Since being elected I have spoken in the House of Commons over the importance this site plays to our history in Stoke-on-Trent and the need for government support.

Working alongside the [Chatterley Whitfield Friends](#), [Stoke-on-Trent City Council](#) and [Historic England](#), we will come up with a long term plan for the site. I am pleased we all agree that there are buildings we can use for a heritage museum, and others that can be used for commercial and educational use. Once the vision is agreed I will lobby government to secure funding for an in-depth feasibility study.

Without the coal the kilns wouldn't have fired. We need our future generations to access their industrial past and continue to celebrate why we love Stoke-on-Trent, Kidsgrove and Talke.



We also joined by representatives from Stoke on Trent City Council, Historic England and we made the Sentinel.

It was a great networking exercise in the 40 minutes every one was on site. Great team work from the 'Friends' who came along and made the visit possible.....



The team with Jonathan and Helen.

Our Team: Ali, Izzy, Chair, Alan, Macca and Mike

Link to the newspaper article:

<https://www.stokesentinel.co.uk/news/stoke-on-trent-news/ministers-visit-sparks-hopes-restoring-3791359>





# The Good, The Bad and the Urban Explorers.....



## INTRUDERS ON SITE !

Stoke on Trent City Council removed the twenty four hour security on the site in January 2018, replacing the excellent service with CCTV cameras. Since then the site has had more damage caused to it and is attracting Urban Explorers. They are displaying photographs on Social Media pages, such as Facebook and some are encouraging fellow Urban Explorers to visit the site,

We the 'Friends' are presently liaising with the Police and City Council to try and find a workable solution to the problem.

Are they GOOD or BAD for the 'Friends'.....?

## The Good and Bad.....

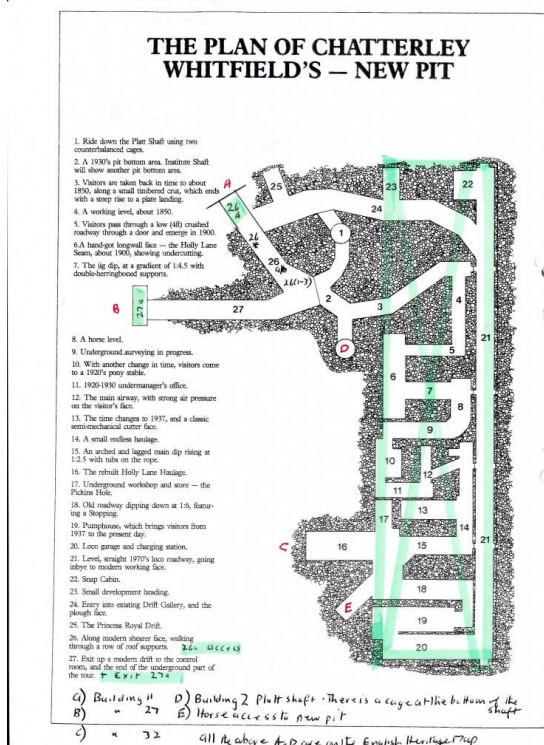
- They have discovered the remains of the 1986 Underground Experience.
- They have broken in to gain access.
- They have risked their lives and serious compromised access to the site by the 'Friends'.

BUT.....

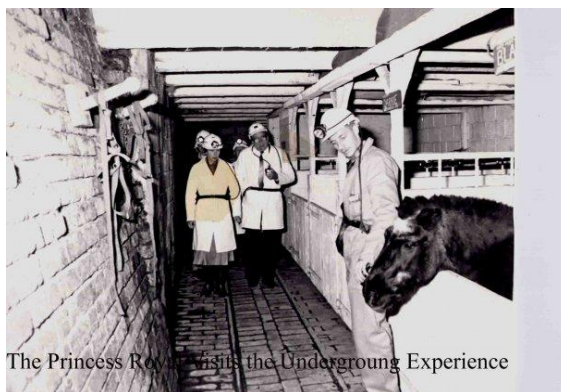
- They have captured some great images.
- Given the 'Friends' the opportunity to consider looking into the possibility of reopening the area !



## The New Pit 1986 to 1993.



When the nearby Wolstanton Colliery closed, the facilities to remove water and control gas in the underground museum at Chatterley Whitfield were stopped. A decision was made to create a new museum mainly on the surface, using the sidings and areas under the Walker fan. It was opened in 1986 by HRH Princess Anne.



The Princess Royal visits the Underground Experience

In 2006 the roof of the complex in the sidings was found to be unsafe and it was demolished, BUT the area under the Walker fan was left and sealed off.

So what remains:

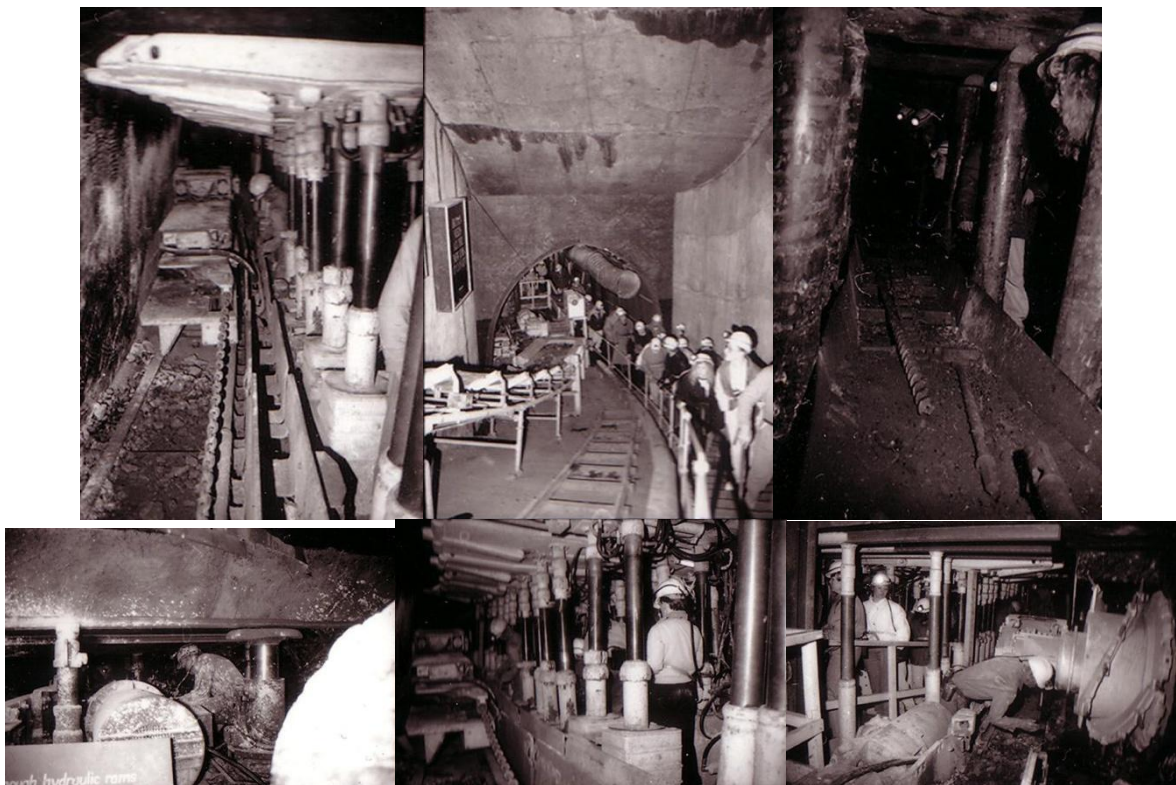


## WELL ACCORDING TO THE URBAN EXPLORERS:

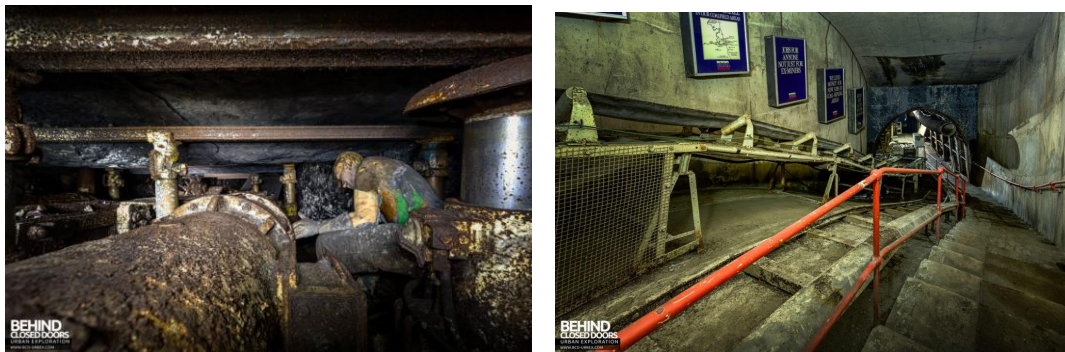
The whole of the New Pit beneath the Platt Heapstead and Walker Fan appears to be in reasonably good condition. Having seen the photographs and compared them to the original site plan, the following areas still remain:

1. Entrance via the Platt shaft, which had revolving which gave the impression to visitors that they were travelling further down the shaft than they actually did.
2. A 1930's pit bottom area.
3. Visitors are taken back in time to around 1850 along a small timbered clad crut.
24. Entry into existing Drift Gallery and the Plough Face
25. The Princess Royal Drift
26. A long modern shearer face walking through a row of roof supports.
27. Exit up modern drift to the control room and end of underground experience part of the tour.

The Museums Days 1986 to 1993



What the Urban Explorers See..... 2019



Photographs are available to view on Social Media Sites



Even when the mine shafts flooded at Chatterley Whitfield the Mining Museum continued with the construction of the “Underground Experience”. This was assembled mainly in the old railway sidings but with a very important part of it built in the “bomb-proof” reinforced concrete constructions of the old ventilation tunnels that led to the lift shafts, an area where visitors passed through in their thousands so that they could see and understand the workings of the mine in perfect safety.

It is the ambition of the Friends to bring this outstanding facility back into use which would add enormously to the Chatterley Whitfield offering as a heritage site, since this feature alone would act as a great publicity draw in our advertising and social media promotions in the future.

**What else happens..... ? There needs to be a feasibility study conducted with the Co-Operation of Stoke on Trent City Council and Historic England.....**

## OBJECTIVE

*The object of the CIO is to advance the **education** of the **public** in the **history of mining** at the former Chatterley Whitfield colliery by the **demonstration of mining methods** and the **exhibition of machinery and ancillary matters** connected with **mining transportation**, **social conditions** and **industrial archaeology** and in such other ways as the trustees consider appropriate”*



**Vision 2020-2025**

## 2020 AND BEYOND....

### MISSION STATEMENT:

*"To archive, share and preserve memories and practices of our coal-mining heritage through active participation of members, associates and the community working in unison"*

### VISION STATEMENT:

*"Grow to become a leading Heritage site within Stoke- on- Trent and the UK, which will educate and involve people in preserving the cultural importance of coal-mining for future generations".*

## THE MEMORIAL GARDEN.....UPDATE

### OUR VISION:

The team are not stopping and are continuing to develop the Garden further. Community Asset Transfer is in process with the council.

A big THANKS to **Landfill Recovery** who donated 20 tons of chippings for the paths - FREE.....

We had a visit from UNITAS who may be in a position to offer help.







**STRONGER  
TOGETHER**



### Grant Scheme - Fund UPDATE

At the of 2017 and in 2018 under a scheme they had recently launched - Community Investment Fund. we applied and were successful in getting two grants. Grant 1 for £ 9,835.00 based on Digitization was awarded and we still have money available still which ear marked for internet access, and digital storage etc. Well we have SPENT some on three Fire Proof Filing Cabinets.....

Grant 2 of £ 17,520.00 based on building improvement was awarded. We have spent £2,100.00 on additional electrical sockets in building 29B. It is a three year project and heating improvement has been implemented.

**CAN YOU THINK OF ANY MORE FUNDING SCHEMES AVAILABLE TO US ?**

### WHERE ELSE MIGHT YOU SEE CHATTERLEY WHITFIELD FRIENDS ?

We are on, Facebook. Twitter, Youtube, Trip Advisor, Google and Instagram.....

Search the internet to find us.....Here are some links:-

INSTAGRAM.....ETC....



This site is being updated regularly by our secretary.....  
[https://www.instagram.com/chatterley\\_whitfield\\_colliery/?hl=en](https://www.instagram.com/chatterley_whitfield_colliery/?hl=en)

chatterley\_whitfield\_colliery

TWITTER



[https://twitter.com/chatt\\_whit?lang=en](https://twitter.com/chatt_whit?lang=en)

TRIP ADVISOR

[https://www.tripadvisor.co.uk/Attraction\\_Review-g186378-d17433018-Reviews-Chatterley\\_Whitfield\\_1st\\_Saturday\\_of\\_month-](https://www.tripadvisor.co.uk/Attraction_Review-g186378-d17433018-Reviews-Chatterley_Whitfield_1st_Saturday_of_month-)

And not forgetting Google.....

This works very well for us, so post photographs and it you can review. It helps with our position in the search engines on the internet.

### What does your membership entitle you to:

Well sometimes it gives you privileged access to areas not open to the public, like the sidings and upstairs in Building 23. Have a look at what can be seen:



Artefacts in Building 23.....The Sidings



Artefacts in Building 23 and ..... A look at the remains of the Boiler House

### Editors View.....

We the 'Friends' appreciate all the work done by the volunteers and continued support from you, the members. Challenging times ahead as we see the site getting worse BUT we are determined to do something about it this year. We look towards the 'Friends' 2020 - 2025 Vision being published.

ONCE AGAIN A BIG THANK YOU FOR YOUR CONTINUING SUPPORT

*Nigel Bowers*